

FREE Dublin Gazette

MAY 12 2022

DUBLIN'S NO. 1 QUALITY PRINT AND DIGITAL NEWSPAPER, FREE TO OVER 300,000 READERS WEEKLY

Dublin confers freedom of the city on three 'inspirational' women



Mary Aiken

Kellie Harrington

Ailbhe Smyth

TRIPLE CROWNED

THREE INSPIRATIONAL WOMEN were this week awarded Dublin's top honour – The Freedom of the City.

Olympic gold medallist Kellie Harrington, well-known human rights activist Ailbhe Smyth and cyberpsychologist Prof Mary Aiken will all receive the awards, after being put forward by current Lord Mayor, Alison Gilliland.

Dublin City Council rowed in behind

her proposal and the decision was taken at this week's meeting to confer the honour at a ceremony in the Mansion House next month.

Ms Gilliland stated that the trio of women had made "a significant contribution to our city and indeed our country."

She explained: "I have nominated Ailbhe Smyth for her work in the areas of human rights, social justice and academia; Profes-

sor Mary Aiken for her work in the areas of cyberpsychology, online safety and security; and Kellie Harrington for her unstinting work in the community, her caring exemplar and role modelling for young people and for her sporting achievements.

"They are three inspiring women and I'm delighted to be able to acknowledge their

CONTINUED ON PAGE 2



**BUS
CONNECTS**
SUSTAINABLE TRANSPORT FOR A BETTER CITY.



Rialtas
na hÉireann
Government
of Ireland

Tionscadal Éireann
Project Ireland
2040

FOIRM FÓGRA ATÁ LE FOILSIÚ DE BHUN ALT 51(3)(a) D'ACHT NA mBÓITHRE, 1993 (ARNA LEASÚ), I NDÁIL LE HIARRATAS AR FHORBAIRT BHÓTHAIR BHEARTAITHE A CHEADÚ AGUS LE TUARASCÁIL AR MHEASÚNACHT TIONCHAIR TIMPEALLACHTA AGUS RÁITEAS TIONCHAIR NATURA A THÍOLACADH.

AN SCÉIM CROÍCHONAIR BUS Ó BELFIELD/AN CHARRAIG DHUBH GO LÁR NA CATHRACH

Rinne an tÚdarás Náisiúnta Iompair iarratas faoi alt 51(2) d'Acht na mBóithre, 1993 (arna leasú), chuig an mBord Pleanála ('an Bord') ar cheadú i ndáil le forbairt bhóthair bheartaithe arb é a bheidh inti:

An Scéim Croíchonair Bus ó Belfield/an Charraig Dhubh go Lár na Cathrach a thógáil, ar scéim í atá thart ar 8.3km ar fad ar an iomlán, atá ródaíthe feadh Chnoc an Teampaill/an R113 ó limistéar atá thart ar 80m lastuaidh de Bhóthar Shráid an tSrutháin/an R827, agus ansin feadh Bhóthar Frascati/an N31, Bhóthar na Carraige/Bhóthar Mhuirfean/Bhóthar Pheambróg/an R118, Bhóthar Pheambróg/Shráid Bhagóid Uachtarach/Shráid Bhagóid Íochtarach/an R816, a thiontaíonn isteach ar Shráid Mhic Liam Íochtarach agus a chríochnaíonn ag an acomhal le Sráid an Mhóta Uachtarach/Cearnóg Mhuirfean Theas/Cearnóg Mhuirfean Thoir, agus atá ródaíthe freisin feadh Lána Nutley, ag tosú ag an gcomhcheangal leis an acomhal lena ngabhann comharthaí ar Bhóthar Stigh Lorgan/an R138 agus ag teacht chun deiridh ag an acomhal le Bóthar Mhuirfean/an R118, a bhfuil gach ceann díobh lonnaithe i gContae Bhaile Átha Cliath agus laistigh de limistéar riaracháin Chomhairle Cathrach Bhaile Átha Cliath nó de limistéar riaracháin Chomhairle Contae Dhún Laoghaire-Ráth an Dúin, agus ar scéim í a bhfuil na nithe seo a leanas, i measc nithe eile, i gceist léi:

- 8.3 km (déthreo) de bhonneagar tosaíochta bus agus de bhainistíocht tráchta;
 - 16.6 km (san iomlán sa dá threo) de bhonneagar rothaíochta agus de shaoráidí rothaíochta;
 - Saoráidí nua/athchóirithe do choisithe agus cosáin nua/athchóirithe a sholáthar feadh na scéime, agus oibreacha coimhdeacha gaolmhara a sholáthar;
 - 27 n-uasghrádú acomhail agus oibreacha coimhdeacha gaolmhara a sholáthar;
 - 55 cinn nua/athchóirithe de shaoráidí taobhiontrála tábla ardaithe;
 - Stadanna bus láithreacha a athchumrú, a fhágfaidh go mbeidh 46 shaoráid stad bus nua ann;
 - Oibreacha Ríochta Poiblí, lena n-áirítear tírdhreachú, cur, troscán sráide, soilsiú sráide, ballaí coinneála, ballaí teorann agus bearta draenála uirbí inbhuanaithe;
 - Oibreacha talún a bhaineann le bóithre, lena n-áirítear ábhar do-ghlactha a thochailt, ábhar a allmhairiú agus ábhair a stóráil go sealadach;
 - Pábháil bhóthair, comharthaíocht, líneáil agus oibreacha coimhdeacha a sholáthar;
 - Geataí, fála agus oibreacha cóireála teorann a sholáthar;
 - Bonneagar draenála nua agus claonta a sholáthar;
 - Fóntais agus seirbhísí a chlaonadh, lena n-áirítear oibreacha coimhdeacha gaolmhara; agus
 - Oibreacha cóiríochta a thógáil, lena n-áirítear oibreacha cóireála teorann agus oibreacha coimhdeacha grádaithe agus tírdhreachaithe;
- mar aon leis na hoibreacha coimhdeacha agus iarmhartacha uile a bhaineann leo sin.

Léirítear ar an léarscáil a ghabhann leis seo suíomh na forbartha bóthair beartaithe. I ndáil leis an bhforbairt bhóthair bheartaithe, rinne an tÚdarás Náisiúnta Iompair an Tuarascáil ar Mheasúnacht Tionchair Timpeallachta a thíolacadh don Bhord, ar tuarascáil í a ullmhaíodh de réir alt 50 d'Acht na mBóithre, 1993 (arna leasú), agus de réir Threoir 2011/92/AE ó Pharlaimint na hEorpa agus ón gComhairle an 13 Nollaig 2011 maidir le measúnacht a dhéanamh ar éifeachtaí tionscadal poiblí agus príobháideach áirithe ar an gcomhshaol arna leasú le Treoir 2014/52/AE ó Pharlaimint na hEorpa agus ón gComhairle an 16 Aibreán 2014.

Ullmhaíodh Ráiteas Tionchair Natura freisin agus tíolacadh don Bhord é i ndáil leis an bhforbairt bhóthair bheartaithe faoi Chuid XAB den Acht um Pleanáil agus Forbairt, 2000 (arna leasú).

Féadfar cóip de dhoiciméid an iarratais, den Tuarascáil ar Mheasúnacht Tionchair Timpeallachta agus den Ráiteas Tionchair Natura a iniúchadh ag na suíomhanna seo a leanas ar laethanta oibre idir 9:15am agus 5:30pm ón Máirt an 17 Bealtaine go dtí an Mháirt an 12 Iúil 2022.

National Transport Authority
Dún Scéine
Lána Fhearchair
Baile Átha Cliath 2
D02 WT20

An Bord Pleanála
64 Sráid Maoilbhríde
Baile Átha Cliath 1
D01 V902

Féadfar cóip den Tuarascáil ar Mheasúnacht Tionchair Timpeallachta (EIAR) (nó cuid/codanna di) agus/nó den Ráiteas Tionchair Natura (NIS) a cheannach ón Údarás Náisiúnta Iompair ach na táillí seo a leanas a íoc:

| | | |
|----------------------|---------------------------|------|
| Imleabhar 1 den EIAR | Achoimre Nearnhtheicniúil | €15 |
| Imleabhar 2 den EIAR | An Príomhthéacs | €150 |
| Imleabhar 3 den EIAR | Figiúirí EIAR | €200 |
| Imleabhar 4 den EIAR | Aguisíní EIAR | €150 |
| NIS | Ráiteas Tionchair Natura | €90 |

Ón Máirt an 17 Bealtaine go dtí an Mháirt an 12 Iúil 2022.

Féadfar iarrataí ceannaigh den sórt sin a sheoladh chuig **An tÚdarás Náisiúnta Iompair, Dún Scéine, Lána Fhearchair, Baile Átha Cliath 2, D02 WT20**, nó chuig info@busconnects.ie nó féadfar iad a dhéanamh ach glao a chur ar **1800 303 653**.

Féadfar cóip de dhoiciméid an iarratais den EIAR agus den NIS a iniúchadh agus a íoslódáil saor in aisce ar an suíomh Gréasáin de chuid an Údaráis Náisiúnta Iompair don Scéim Croíchonair Bus ó Belfield/an Charraig Dhubh go Lár na Cathrach ag: www.belfieldblackrockscheme.ie.

I ndáil le hiarratas ar cheadú faoi alt 51 d'Acht na mBóithre, 1993 (arna leasú), féadfaidh an Bord, le hordú, an fhorbairt bhóthair bheartaithe a cheadú, fara nó d'éagmais modhnuithe, nó féadfaidh sé diúltú forbairt den sórt sin, nó aon chuid di, a cheadú.

Féadfar aighneachtaí/tuairimí maidir leo seo a dhéanamh i scríbhinn chuig an mBord ag **An Bord Pleanála (Rannóg Bonneagair Straitéisigh), 64 Sráid Maoilbhríde, Baile Átha Cliath 1, D01 V902**:

- na héifeachtaí is dóigh a bheidh ag an bhforbairt bhóthair bheartaithe ar an gcomhshaol, má dhéantar í;
- impleachtaí na forbartha bóthair bheartaithe, má dhéantar í, do phleanáil chúil agus forbairt inchothaithe sa limistéar ina mbeartaítear an fhorbairt bhóthair bheartaithe a shuíomh; agus
- na héifeachtaí suntasacha is dóigh a bheidh ag an bhforbairt bhóthair bheartaithe ar láithreán Eorpach

idir an **Mháirt an 17 Bealtaine** agus an **Mháirt an 12 Iúil 2022**.

Ní foláir táille €50 a bheith ag gabháil le haon aighneachtaí/tuairimí agus ní foláir iad a bheith faighte ag an mBord tráth nach déanaí ná **5.30pm an 12 Iúil 2022**. Ní bheidh feidhm ag an táille sin maidir le comhlachtaí forordaithe áirithe, lena n-áirítear iad sin atá sonraithe in alt 51(3)(b) d'Acht na mBóithre, 1993 (arna leasú), ná maidir le húinéirí talún agus daoine eile a bhfuil leas dlíthiúil acu i dtalamh agus atá ag agóid i gcoinne fáil éigeantach talún a bhfuil leas den sórt sin acu ann i gcás fála éigeantáil.

Féadfar aighneachtaí/tuairimí a dhéanamh ar shuíomh Gréasáin an Bhoird Pleanála freisin ag an seoladh seo a leanas: <https://online.pleanala.ie/en-ie/sid/observation>.

Ba cheart aon cheisteanna a bhaineann leis an bpróiseas iarratais a chur ar an Rannóg um Fhorbairt Bonneagair Straitéisigh de chuid an Bhoird Pleanála (Teil. 01-8588100).

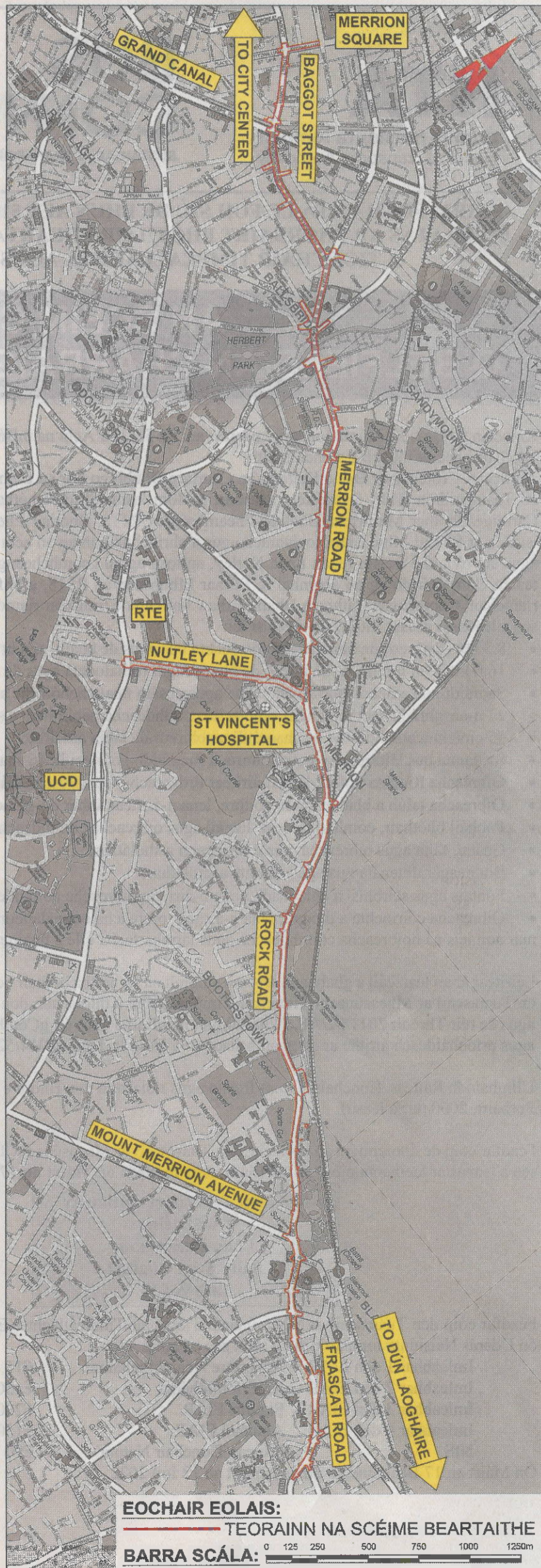
Féadfaidh duine bailíocht aon chinnidh ón mBord ar fhorbairt bhóthair bheartaithe a cheistiú trí bhíthin iarratas a dhéanamh ar athbhreithniú breithiúnach faoi Rialacha na nUaschúirteanna (agus go háirithe Ordú 84 de Rialacha na nUaschúirteanna atá in I.R. Uimh. 15 de 1986, arna leasú) agus de réir ailt 50, 50A agus 50B den Acht um Pleanáil agus Forbairt, 2000 (arna leasú).

Féadfar faisnéis phraiticiúil faoin sásra athbhreithnithe a rochtain faoin gceannteideal seo: "Fógraí Dlí – Fógra maidir le hAthbhreithniú Breithiúnach" ar shuíomh Gréasáin an Bhoird Pleanála ag www.pleanala.ie. Tá an faisnéis sin ar fáil freisin ar shuíomh Gréasáin na Seirbhíse um Fhaisnéis do Shaoránaigh ag www.citizensinformation.ie.

Arna dhátú an 12ú lá seo de Bhealtaine 2022.

Aidan Gallagher

Ceann Bhoneagar BusConnects Bhaile Átha Cliath
An tÚdarás Náisiúnta Iompair





**BUS
CONNECTS**
SUSTAINABLE TRANSPORT FOR A BETTER CITY.



Rialtas
na hÉireann
Government
of Ireland

Tionscadal Éireann
Project Ireland
2040

FORM OF NOTICE TO BE PUBLISHED PURSUANT TO SECTION 51(3)(a) OF THE ROADS ACT 1993 (AS AMENDED) IN RELATION TO AN APPLICATION FOR APPROVAL OF A PROPOSED ROAD DEVELOPMENT AND THE SUBMISSION OF AN ENVIRONMENTAL IMPACT ASSESSMENT REPORT AND A NATURA IMPACT STATEMENT.

BELFIELD / BLACKROCK TO CITY CENTRE CORE BUS CORRIDOR SCHEME

The National Transport Authority (NTA) has applied under section 51(2) of the Roads Act 1993 (as amended) to An Bord Pleanála ('the Board') for approval in relation to a proposed road development consisting of:

The construction of the Belfield / Blackrock to City Centre Core Bus Corridor Scheme, which has an overall length of approximately 8.3km, is routed along the R113 Temple Hill from approximately 80m to the north of the R827 Stradbroke Road, then along the N31 Frascati Road, the R118 Rock Road/Merrion Road/Pembroke Road, the R816 Pembroke Road/Baggot Street Upper/Baggot Street Lower, turns onto Fitzwilliam Street Lower and terminates at the junction with Mount Street Upper/Merrion Square South/Merrion Square East, and is also routed along Nutley Lane, commencing at the tie-in with the signalised junction on the R138 Stillorgan Road and terminating at the junction with the R118 Merrion Road, all in the County of Dublin and within the Dublin City Council (DCC) and Dún Laoghaire-Rathdown County Council (DLRCC) administrative areas, comprising inter alia:

- 8.3km (two-way) of bus priority infrastructure and traffic management;
 - 16.6km (total both directions) of cycling infrastructure and facilities;
 - Provision of new/refurbished pedestrian facilities and footpaths along the scheme and associated ancillary works;
 - Provision of 27 junction upgrades and associated ancillary works;
 - Provision of 55 new/refurbished raised table side entry facilities;
 - Reconfiguration of existing bus stops resulting in 46 new bus stop facilities;
 - Public Realm works including landscaping, planting, street furniture, street lighting, retaining walls, boundary walls and sustainable urban drainage (SuDS) measures;
 - Roads associated earthworks including excavation of unacceptable material, importation of material, temporary storage of materials;
 - Provision of road pavement, signing, lining and ancillary works;
 - Provision of gates, fencing and boundary treatment works;
 - Provision of new and diverted drainage infrastructure;
 - Diversion of utilities and services including associated ancillary works; and
 - Construction of accommodation works including boundary treatment and ancillary grading and landscaping works;
- together with all ancillary and consequential works associated therewith.

The location of the proposed road development is illustrated in the accompanying map. The NTA has submitted to the Board the Environmental Impact Assessment Report prepared in accordance with Section 50 of the Roads Act 1993 (as amended) and Directive 2011/92/EU of the European Parliament and of the Council of 13 December 2011 on the assessment of the effects of certain public and private projects on the environment as amended by Directive 2014/52/EU of the European Parliament and of the Council of 16 April 2014 in respect of the proposed road development.

A Natura Impact Statement has also been prepared and has been submitted to the Board in respect of the proposed road development under Part XAB of the Planning and Development Act 2000 (as amended).

A copy of the application documentation, Environmental Impact Assessment Report and the Natura Impact Statement may be inspected at the following locations on working days between the hours of **9:15am and 5:30pm** from **Tuesday 17th May to Tuesday 12th July 2022**.

National Transport Authority
Dun Scéine
Harcourt Lane
Dublin 2
D02 WT20

An Bord Pleanála
64 Marlborough Street
Dublin 1
D01 V902

A copy of the Environmental Impact Assessment Report (EIAR) (or part(s) thereof) and/ or the Natura Impact Statement (NIS) may be purchased from the National Transport Authority on payment of the following fees:

| | | |
|---------------|-------------------------|------|
| EIAR Volume 1 | Non-Technical Summary | €15 |
| EIAR Volume 2 | Main Text | €150 |
| EIAR Volume 3 | EIAR Figures | €200 |
| EIAR Volume 4 | EIAR Appendices | €150 |
| NIS | Natura Impact Statement | €90 |

from Tuesday 17th May to Tuesday 12th of July 2022.

Such purchase requests may be sent to **National Transport Authority, Dún Scéine, Harcourt Lane, Dublin 2, D02 WT20** or info@busconnects.ie or by calling **1800 303 653**.

A copy of the application documentation, EIAR and NIS may be inspected and downloaded free of charge at the National Transport Authority website for the Belfield / Blackrock to City Centre Core Bus Corridor Scheme at: www.belfieldblackrockscheme.ie.

The Board may, in relation to an application for approval under Section 51 of the Roads Act 1993 (as amended), by order, approve the proposed road development with or without modifications or it may refuse such development or any part thereof.

Submissions/observations may be made in writing to the Board at **An Bord Pleanála (Strategic Infrastructure Division), 64 Marlborough Street, Dublin 1, D01 V902** in relation to:

- the likely effects on the environment of the proposed road development, if carried out;
- the implications of the proposed road development, if carried out, for proper planning and sustainable development in the area in which it is proposed to situate the proposed road development; and
- the likely significant effects of the proposed road development on a European site

between **Tuesday 17th May** and **Tuesday 12th July 2022**.

Any submissions/observations must be accompanied by a fee of €50 and must be received by the Board not later than **5.30pm on the 12th July 2022**. This fee will not apply to certain prescribed bodies including those specified in section 51(3)(b) of the Roads Act 1993 (as amended) or to landowners and others with a legal interest in land who are objecting to compulsory acquisition of land in which they have such an interest in a compulsory acquisition case.

Submissions/observations can also be made on the An Bord Pleanála website at the following address: <https://online.pleanala.ie/en-ie/sid/observation>.

Any enquiries relating to the application process should be directed to the Strategic Infrastructure Development Section of An Bord Pleanála (Tel. 01-8588100).

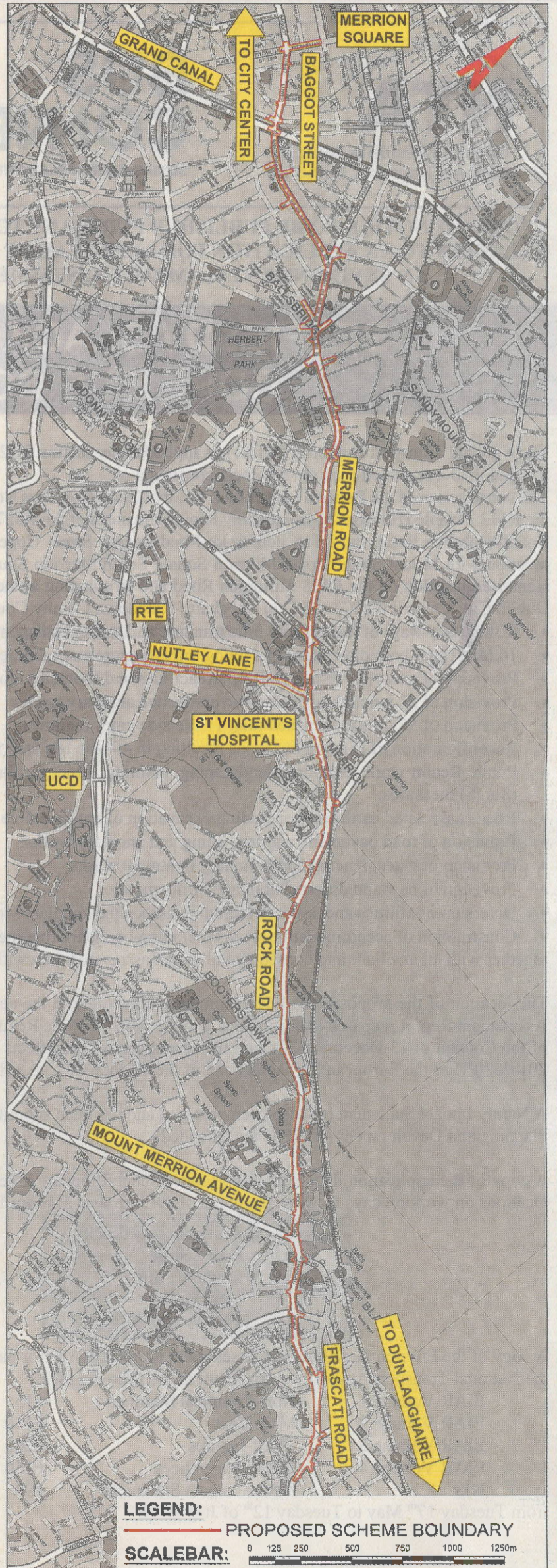
A person may question the validity of any decision by the Board on a proposed road development by way of an application for judicial review under the Rules of the Superior Courts (and in particular Order 84 of the Rules of the Superior Courts contained in S.I. No. 15 of 1986 as amended) and in accordance with sections 50, 50A and 50B of the Planning and Development Act 2000 (as amended).

Practical information on the review mechanism can be accessed under the heading: "Legal Notices - Judicial Review Notice" on An Bord Pleanála website www.pleanala.ie. This information is also available on the Citizens Information Service website www.citizensinformation.ie.

Dated this 12th day of May 2022.

Aidan Gallagher

Head of BusConnects Dublin Infrastructure
National Transport Authority





**BUS
CONNECTS**
SUSTAINABLE TRANSPORT FOR A BETTER CITY.



Rialtas
na hÉireann
Government
of Ireland

Tionscadal Éireann
Project Ireland
2040

FOIRM FÓGRA FAOI ORDÚ CEANNAIGH ÉIGEANTAIGH FAOI ALT 76 D'ACHT NA dTITHE, 1966, AGUS FAOIN TRÍÚ SCEIDEAL A GHABHANN LEIS, ARNA LEATHNÚ LE HALT 10 DEN ACHT RIALTAIS ÁITIÚIL (UIMH. 2), 1960, ATÁ LE FOILSIÚ DE RÉIR AIRTEAGAL 4(a) DEN TRÍÚ SCEIDEAL A GHABHANN LE hACHT NA dTITHE, 1966, ARNA LEASÚ LEIS AN ACHT UM PLEANÁIL AGUS FORBAIRT, 2000 (ARNA LEASÚ), AGUS FAOI ALT 213 DEN ACHT UM PLEANÁIL AGUS FORBAIRT, 2000 (ARNA LEASÚ), FAOI ALT 184 DEN ACHT RIALTAIS ÁITIÚIL, 2001, AGUS FAOI ALT 44 DEN ACHT UM ÚDARÁS IOMPAIR BHAILE ÁTHA CLIATH 2008 (ARNA LEASÚ).

FORM OF NOTICE OF A COMPULSORY PURCHASE ORDER UNDER SECTION 76 OF AND THE THIRD SCHEDULE TO THE HOUSING ACT 1966 AS EXTENDED BY SECTION 10 OF THE LOCAL GOVERNMENT (NO. 2) ACT 1960 TO BE PUBLISHED IN ACCORDANCE WITH ARTICLE 4(a) OF THE THIRD SCHEDULE TO THE HOUSING ACT, 1966, AS AMENDED BY THE PLANNING AND DEVELOPMENT ACT 2000 (AS AMENDED), AND UNDER SECTION 213 OF THE PLANNING AND DEVELOPMENT ACT, 2000 (AS AMENDED), SECTION 184 OF THE LOCAL GOVERNMENT ACT 2001 AND SECTION 44 OF THE DUBLIN TRANSPORT AUTHORITY ACT 2008 (AS AMENDED).

FÁIL ÉIGEANTACH TALÚN / COMPULSORY ACQUISITION OF LAND

**"ORDÚ CEANNAIGH ÉIGEANTAIGH NA
SCÉIME CROÍCHONAIR BUS
Ó BELFIELD/AN CHARRAIG DHUBH GO LÁR NA CATHRACH, 2022"**

I bhfeidhmiú na gcumhachtaí a thugtar dó le halt 76 d'Acht na dTithe, 1966, agus leis an Tríú Sceideal a ghabhann leis, arna leathnú le halt 10 den Acht Rialtais Áitiúil (Uimh. 2), 1960, arna ionadú le halt 86 d'Acht na dTithe, 1966, arna leasú le halt 6 d'Acht na mBóithre, 1993, agus leis an Dara Sceideal a ghabhann leis, agus arna leasú leis an Acht um Pleanáil agus Forbairt, 2000 (arna leasú), le halt 184 den Acht Rialtais Áitiúil, 2001, agus le halt 44 den Acht um Údarás Iompair Bhaile Átha Cliath 2008 (arna leasú), rinne an tÚdarás Náisiúnta Iompair (dá ngairtear an "tÚdarás" anseo ina dhiaidh seo) ordú a bhfuil an teideal sin thuas air agus atá le tíolacadh don Bhord Pleanála lena dheimhniú.

Má dheimhnítear é, údarófar leis an ordú don Údarás an talamh agus/nó na cearta a thuairiscítear i gCuid I, i gCuid II agus i gCuid IV (Roinn A) den Sceideal a ghabhann leis seo a fháil go héigeantach chun an Scéim Croíchonair Bus ó Belfield/an Charraig Dhubh go Lár na Cathrach a thógáil chun an t-iompar poiblí a éascú, mar aon leis na hoibreacha coimhdeacha agus iarmhartacha uile a bhaineann leo sin. Tá an scéim thart ar 8.3km ar fad ar an iomlán agus tá sí ródaíthe feadh Chnoc an Teampaill/an R113 ó limistéar atá thart ar 80m lastuaidh de Bhóthar Shráid an tSrutháin/an R827, agus ansin feadh Bhóthar Frascati/ an N31, Bhóthar na Carraige/Bhóthar Mhuirfean/Bhóthar Pheambróg/an R118, Bhóthar Pheambróg/Shráid Bhagóid Uachtarach/Shráid Bhagóid Íochtarach/an R816, tiontaíonn sí isteach ar Shráid Mhic Liam Íochtarach agus críochnaíonn sí ag an acomhal le Sráid an Mhóta Uachtarach/Cearnóg Mhuirfean Theas/Cearnóg Mhuirfean Thoir, agus tá sí ródaíthe freisin feadh Lána Nutley, ag tosú ag an gcomhcheangal leis an acomhal lena ngabhann comharthaí ar Bhóthar Stigh Lorgan/an R138 agus ag teacht chun deiridh ag an acomhal le Bóthar Mhuirfean /an R118, a bhfuil gach ceann díobh lonnaithe i gContae Bhaile Átha Cliath.

Tabharfar fógra aonair i scríbhinn d'úinéirí, léasaithe agus áititheoirí na talún agus/nó na gcearta a thuairiscítear i gCuid I, i gCuid II agus i gCuid IV den Sceideal.

Údarófar don Údarás leis an ordú na cearta slí poiblí a thuairiscítear i gCuid III (Roinn A) den Sceideal a ghabhann leis seo a mhúchadh trí ordú arna dhéanamh aige tar éis dó an talamh a fháil, i gcás go mbeidh na cearta

**"BELFIELD / BLACKROCK TO CITY CENTRE
CORE BUS CORRIDOR SCHEME
COMPULSORY PURCHASE ORDER 2022"**

The National Transport Authority (hereinafter referred to as the "NTA") in exercise of the powers conferred upon them by Section 76 of the Housing Act, 1966, and the Third Schedule thereto, as extended by Section 10 of the Local Government (No. 2) Act, 1960 as substituted by Section 86 of the Housing Act, 1966 as amended by Section 6 and the Second Schedule to the Roads Act, 1993 and as amended by the Planning and Development Act, 2000 (as amended), Section 184 of the Local Government Act 2001 and Section 44 of the Dublin Transport Authority Act 2008 (as amended), have made an order entitled as above which is about to be submitted to An Bord Pleanála for confirmation.

If confirmed, the order will authorise the NTA to acquire compulsorily the land and/or rights described in Part I, Part II and Part IV (Section A) of the Schedule hereto for the purposes of construction of the Belfield / Blackrock to City Centre Core Bus Corridor Scheme for the purposes of facilitating public transport, and together with all ancillary and consequential works associated therewith. The scheme has an overall length of approximately 8.3km and is routed along the R113 Temple Hill from approximately 80m to the north of the R827 Stradbroke Road, then along the N31 Frascati Road, the R118 Rock Road/Merrion Road/Pembroke Road, the R816 Pembroke Road/Baggot Street Upper/Baggot Street Lower, turns onto Fitzwilliam Street Lower and terminates at the junction with Mount Street Upper/Merrion Square South/Merrion Square East, and is also routed along Nutley Lane, commencing at the tie-in with the signalised junction on the R138 Stillorgan Road and terminating at the junction with the R118 Merrion Road, all in the County of Dublin.

Owners, lessees and occupiers of the land and/or rights described in Part I, Part II and Part IV of the Schedule will receive individual written notice.

The order will authorise the NTA to extinguish the public rights described in Part III (Section A) of the Schedule hereto, by order made by it after it has acquired the land, where the said public rights are over

slí poiblí thar an talamh arna fháil amhlaidh nó thar aon chuid den talamh sin, nó thar talamh atá tadhlaigh leis an talamh sin arna fháil amhlaidh nó le haon chuid den talamh sin nó a bhaineann leis an gcéanna.

the land so acquired or any part thereof, or over land adjacent to or associated with the land so acquired or any part thereof.

Údarófar don Údarás leis an ordú na cearta slí poiblí a thuairiscítear i gCuid III (Roinn B) den Sceideal a shrianadh, nó cur isteach orthu ar shlí eile.

The order will authorise the NTA to restrict or otherwise interfere with the public rights described in Part III (Section B) of the Schedule.

Údarófar don Údarás leis an ordú na cearta príobháideacha a thuairiscítear i gCuid IV (Roinn B) den Sceideal a shrianadh, nó cur isteach orthu ar shlí eile.

The order will authorise the NTA to restrict or otherwise interfere with the private rights described in Part IV (Section B) of the Schedule.

Údarófar don Údarás leis an ordú na cearta príobháideacha a thuairiscítear i gCuid IV (Roinn C) den Sceideal a shrianadh, nó cur isteach orthu ar shlí eile, go sealadach.

The order will authorise the NTA to temporarily restrict or otherwise interfere with the private rights described in Part IV (Section C) of the Schedule.

Ba cheart agóid i gcoinne an ordaithe a dhéanamh i scríbhinn chuig **An Bord Pleanála (An Rannóg um Fhorbairt Bonneagair Straitéisigh), 64 Sráid Maoilbhríde, Baile Átha Cliath 1, D01 V902**, chun go sroichfidh sí an Bord sin roimh **5.30pm an 12^ú lá d'Iúil 2022**.

Any objection to the order should be made in writing to **An Bord Pleanála (Strategic Infrastructure Division), 64 Marlborough Street, Dublin 1, D01 V902**, so as to reach the said Board before **5.30pm on the 12th day of July 2022**.

Ní fhéadfaidh an Bord:-

The Board cannot confirm:-

- (a) ordú ceannaigh éigeantaigh i ndáil leis an talamh a dheimhniú más rud é go ndéanann úinéir, léasaí nó áititheoir na talún agóid i ndáil leis an bhfáil is agóid nach dtarraingítear siar;
- (b) ordú lena n-údaraitear ceart slí poiblí a mhúchadh nó a shrianadh, nó cur isteach air ar shlí eile, a dheimhniú más ann d'agóid i gcoinne an ceart slí poiblí a mhúchadh nó a shrianadh, nó i gcoinne cur isteach air, is agóid nach dtarraingítear siar;
- (c) ordú lena n-údaraitear ceart príobháideach a fháil nó a shrianadh, nó cur isteach air, a dheimhniú más ann d'agóid ó úinéir, léasaí nó áititheoir an chirt phríobháidigh i gcoinne an ceart príobháideach a fháil nó a shrianadh, nó i gcoinne cur isteach air, is agóid nach dtarraingítear siar,

- (a) a compulsory purchase order in respect of the land if an objection is made in respect of the acquisition by an owner, lessee or occupier of the land, and not withdrawn;
- (b) an order which authorises the extinguishment, restriction or interference with a public right of way if there is an objection to the extinguishment, restriction or interference with a public right of way which is not withdrawn;
- (c) an order which authorises the acquisition, restriction or interference with a private right if there is an objection to the acquisition, restriction or interference with the private right by an owner, lessee or occupier of the private right which is not withdrawn,

go dtí go mbeidh an agóid/na hagóidí breithnithe aige.

until it has considered the objection(s).

Tá lánrogha ag an mBord Pleanála faoi alt 218 den Acht um Pleanáil agus Forbairt, 2000 (arna leasú), chun éisteacht ó bhéal a sheoladh.

An Bord Pleanála has an absolute discretion under Section 218 of the Planning and Development Act 2000 (as amended) to hold an oral hearing.

Roimh dó a chinneadh a dhéanamh i dtaobh an tOrdú Ceannaigh Éigeantaigh a dheimhniú nó gan é a dheimhniú, ní foláir don Bhord breithniú a dhéanamh ar aon agóid a dhéantar agus nach dtarraingítear siar, ar aon aighneachtaí nó tuairimí breise a dhéantar de bhun iarraidh ón mBord faoi alt 217A den Acht um Pleanáil agus Forbairt, 2000 (arna leasú), agus ar aon tuarascáil ón duine a sheol an éisteacht ó bhéal, i gcás go seolfar éisteacht ó bhéal den sórt sin.

Before making its decision on an application to confirm the Compulsory Purchase Order, the Board must consider any objection made and not withdrawn, any additional submissions or observations made pursuant to a request by the Board under Section 217A of the Planning and Development Act 2000 (as amended) and any report of the person who held the oral hearing, if such an oral hearing takes place.

Más cuí leis, féadfaidh an Bord an fháil éigeantach nó aon chuid di a dheimhniú, fara nó d'éagmais coinníollacha nó modhnuithe, nó an fháil éigeantach nó aon chuid di a neamhniú.

The Board, if it thinks fit, may confirm the compulsory acquisition or any part thereof, with or without conditions or modifications, or to annul the compulsory acquisition or any part thereof.

Maidir le Tuarascáil ar Mheasúnacht Tionchair Timpeallachta, agus Ráiteas Tionchair Natura, ar tugadh fógra poiblí leithleach ina thaobh, ullmhaíodh iad i ndáil leis an bhforbairt a bheartaítear a dhéanamh ar an talamh. Fianaise (i) maidir leis na héifeachtaí is dóigh a bheidh ag an bhforbairt bheartaithe ar an gcomhshaol, (ii) maidir le himpleacht na forbartha beartaithe do phleanáil chuí agus forbairt inchothaithe sa limistéar ina mbeartaítear an fhorbairt bheartaithe a shuíomh, agus (iii) maidir leis na héifeachtaí suntasacha is dóigh a bheidh ag an bhforbairt bheartaithe ar Láithreáin Eorpacha, féadfar í a éisteacht ag aon éisteacht ó bhéal a d'fhéadfaí a sheoladh.

An Environmental Impact Assessment Report, and a Natura Impact Statement, for which separate public notice has been given, have been prepared in respect of the development which it is proposed to carry out on the land. Evidence in relation to (i) the likely effects on the environment of the proposed development, (ii) the implication of the proposed development for proper planning and sustainable development in the area in which it is proposed to situate the proposed development and (iii) the likely significant effects of the proposed development on European Sites may be heard at any oral hearing, that may be held.

Féadfar cóip den ordú agus de na léarscáileanna dá dtagraítear ann a fheiceáil ag:

A copy of the order and of the maps referred to in it may be seen at:

| | | | |
|---|--|--|--|
| An tÚdarás Náisiúnta Iompair Dún Scéine Lána Fhearchair Baile Átha Cliath 2 D02 WT20 | An Bord Pleanála, 64 Sráid Maoilbhríde, Baile Átha Cliath 1, D01 V902 | National Transport Authority Dún Scéine Harcourt Lane Dublin 2 D02 WT20 | An Bord Pleanála, 64 Marlborough Street, Dublin 1, D01 V902 |
|---|--|--|--|

ar laethanta oibre idir 9:15am agus 5:30pm ón Máirt an 17 Bealtaine 2022 go dtí an Mháirt an 12 Iúil 2022.

on working days between the hours of 9:15am and 5:30pm from Tuesday 17th of May 2022 to Tuesday 12th July 2022.

Tá cóip den ordú agus de na léarscáileanna dá dtagraítear ann ar fáil freisin ar an suíomh Gréasáin de chuid an Údarás Náisiúnta Iompair don Scéim Croíchonair Bus ó Belfield/an Charraig Dhubh go Lár na Cathrach ag: www.belfieldblackrockscheme.ie

A copy of the order and of the maps referred to in it are also available on the National Transport Authority website for the Belfield / Blackrock to City Centre Core Bus Corridor Scheme at: www.belfieldblackrockscheme.ie

Arna dhátú an 12^ú lá seo de Bhealtaine 2022.

Dated this 12th day of May 2022.

Aidan Gallagher

Aidan Gallagher

Ceann Bhoneagar BusConnects Bhaile Átha Cliath
An tÚdarás Náisiúnta Iompair

Head of Bus Connects Dublin Infrastructure
National Transport Authority

SCEIDEAL / SCHEDULE

CUID I / PART I

Tailte atá á bhFáil go Buan / Lands Being Permanently Acquired

Talamh seachas talamh arb é atá ann teach nó tithe atá neamhoiriúnach chun daoine cónaí ann nó iontu agus nach féidir ar chostas réasúnach é nó iad a dhéanamh oiriúnach chun daoine cónaí ann nó iontu / Land other than land consisting of a house or houses unfit for human habitation and not capable of being rendered fit for human habitation at reasonable expense

Chun mionsonraí a fháil faoi Úinéirí nó Úinéirí Ainme, faoi Léasaithe nó Léasaithe Ainme nó faoi Áititheoirí, féach Ordú Ceannaigh Éigeantaigh na Scéime Croíchonair Bus ó Belfield/an Charraig Dhubh go Lár na Cathrach, 2022, ag www.belfieldblackrockscheme.ie / For details of the Owners or Reputed Owners/Lesseees or Reputed Lessees/Occupiers please see the Belfield / Blackrock to City Centre Core Bus Corridor Scheme Compulsory Purchase Order 2022 at www.belfieldblackrockscheme.ie.

| Uimhir ar an léarscáil a taisceadh ag an Údarás Number on map deposited at NTA | Méid, tuairisc agus suíomh na talún Quantity, description and situation of land |
|---|---|
| 1000(1).1f | Achar (Area) (Ha): 0.13336 Achar (Area) (m2): 1333.6 Tuairisc (Description): Áineas (Recreational) Contae (County): Baile Átha Cliath (Dublin) Seoladh (Address): Elm Park Golf And Sports Club, Nutley House, 22 Nutley Lane, Dublin 4, D04 WE09 |
| 1001(1).1c | Achar (Area) (Ha): 0.08303 Achar (Area) (m2): 830.3 Tuairisc (Description): Tráchtáil (Commercial) Contae (County): Baile Átha Cliath (Dublin) Seoladh (Address): RTE Campus, Nutley Lane, Donnybrook, Dublin 4 |
| 1003(1).1i | Achar (Area) (Ha): 0.11441 Achar (Area) (m2): 1144.1 Tuairisc (Description): Pobal (Community) Contae (County): Baile Átha Cliath (Dublin) Seoladh (Address): Saint Vincents Hospital Lands, Merrion Road & Nutley Lane, Dublin 4 |

| Uimhir ar an léarscáil a taisceadh ag an Údarás Number on map deposited at NTA | Méid, tuairisc agus suíomh na talún Quantity, description and situation of land |
|---|--|
| 1003(5).1i | Achar (Area) (Ha): 0.04671 Achar (Area) (m2): 467.1 Tuairisc (Description): Pobal (Community) Contae (County): Baile Átha Cliath (Dublin) Seoladh (Address): Saint Vincents Hospital Lands, Merrion Road & Nutley Lane, Dublin 4 |
| 1003(6).1i | Achar (Area) (Ha): 0.00174 Achar (Area) (m2): 17.4 Tuairisc (Description): Pobal (Community) Contae (County): Baile Átha Cliath (Dublin) Seoladh (Address): Saint Vincents Hospital Lands, Merrion Road & Nutley Lane, Dublin |
| 1004(1).1c | Achar (Area) (Ha): 0.00459 Achar (Area) (m2): 45.9 Tuairisc (Description): Tráchtáil (Commercial) Contae (County): Baile Átha Cliath (Dublin) Seoladh (Address): The Merrion Shopping Centre & Office Blocks A & B, Merrion Road, Dublin 4 |

**SCEIDEAL /
SCHEDULE CUID I /
PART I**

Tailte atá á bhFáil go Buan / Lands Being Permanently Acquired

Talamh seachas talamh arb é atá ann teach nó tithe atá neamhoiriúnach chun daoine cónaí ann nó iontu agus nach féidir ar chostas réasúnach é nó iad a dhéanamh oiriúnach chun daoine cónaí ann nó iontu / Land other than land consisting of a house or houses unfit for human habitation and not capable of being rendered fit for human habitation at reasonable expense.

Chun mionsonraí a fháil faoi Úinéirí nó Úinéirí Ainme, faoi Léasaithe nó Léasaithe Ainme nó faoi Áititheoirí, féach Ordú Ceannaigh Éigeantaigh na Scéime Croíchonair Bus ó Belfield/an Charraig Dhubh go Lár na Cathrach, 2022, ag www.belfieldblackrockscheme.ie / For details of the Owners or Reputed Owners/Lesseees or Reputed Lesseees/Occupiers please see the Belfield / Blackrock to City Centre Core Bus Corridor Scheme Compulsory Purchase Order 2022 at www.belfieldblackrockscheme.ie.

| Uimhir ar an léarscáil a taisceadh ag an Údarás Number on map deposited at NTA | Méid, tuairisc agus suíomh na talún Quantity, description and situation of land | Uimhir ar an léarscáil a taisceadh ag an Údarás Number on map deposited at NTA | Méid, tuairisc agus suíomh na talún Quantity, description and situation of land |
|---|--|---|--|
| 1004(2).1c | Achar (Area) (Ha): 0.00008 Achar (Area) (m2): 0.8 Tuairisc (Description): Tráchtáil (Commercial) Contae (County): Baile Átha Cliath (Dublin) Seoladh (Address): The Merrion Shopping Centre & Office Blocks A & B, Merrion Road, Dublin 4 | 1017(1).1f | Achar (Area) (Ha): 0.00068 Achar (Area) (m2): 6.8 Tuairisc (Description): Áineas (Recreational) Contae (County): Baile Átha Cliath (Dublin) Seoladh (Address): Blackrock Park, Rock Road, Blackrock, Co. Dublin |
| 1004(3).1c | Achar (Area) (Ha): 0.00062 Achar (Area) (m2): 6.2 Tuairisc (Description): Tráchtáil (Commercial) Contae (County): Baile Átha Cliath (Dublin) Seoladh (Address): The Merrion Shopping Centre & Office Blocks A & B, Merrion Road, Dublin 4 | 1017(2).1f | Achar (Area) (Ha): 0.00301 Achar (Area) (m2): 30.1 Tuairisc (Description): Áineas (Recreational) Contae (County): Baile Átha Cliath (Dublin) Seoladh (Address): Blackrock Park, Rock Road, Blackrock, Co. Dublin |
| 1005(1).1d | Achar (Area) (Ha): 0.00329 Achar (Area) (m2): 32.9 Tuairisc (Description): Garraí Tí (House Garden) Contae (County): Baile Átha Cliath (Dublin) Seoladh (Address): 85 Merrion Road, Dublin 4, D04 Y2N8 | 1017(3).1f | Achar (Area) (Ha): 0.03662 Achar (Area) (m2): 366.2 Tuairisc (Description): Áineas (Recreational) Contae (County): Baile Átha Cliath (Dublin) Seoladh (Address): Blackrock Park, Rock Road, Blackrock, Co. Dublin |
| 1006(1).1d | Achar (Area) (Ha): 0.00259 Achar (Area) (m2): 25.9 Tuairisc (Description): Garraí Tí (House Garden) Contae (County): Baile Átha Cliath (Dublin) Seoladh (Address): Laneway Leading to Merrion View Avenue and Adjoining Entrance Gates, Dublin 4 | 1019(1).1i | Achar (Area) (Ha): 0.04605 Achar (Area) (m2): 460.5 Tuairisc (Description): Pobal (Community) Contae (County): Baile Átha Cliath (Dublin) Seoladh (Address): Blackrock Clinic, Rock Road, Blackrock, Co. Dublin, A94 E4X7 |
| 1007(1).1c | Achar (Area) (Ha): 0.00446 Achar (Area) (m2): 44.6 Tuairisc (Description): Tráchtáil (Commercial) Contae (County): Baile Átha Cliath (Dublin) Seoladh (Address): Clayton Hotel, Merrion Road, Dublin 4, D04 P3C3 | 1020(1).1i | Achar (Area) (Ha): 0.01123 Achar (Area) (m2): 112.3 Tuairisc (Description): Pobal (Community) Contae (County): Baile Átha Cliath (Dublin) Seoladh (Address): Glenalla, Castledawson Avenue, Blackrock, Co. Dublin |
| 1010(1).1h | Achar (Area) (Ha): 0.05080 Achar (Area) (m2): 508.0 Tuairisc (Description): Criosaithe (Zoned) Contae (County): Baile Átha Cliath (Dublin) Seoladh (Address): Greenspace adjoining 7 Ballsbridge Terrace, Ballsbridge, Dublin 4 | 1021(1).1i | Achar (Area) (Ha): 0.05602 Achar (Area) (m2): 560.2 Tuairisc (Description): Pobal (Community) Contae (County): Baile Átha Cliath (Dublin) Seoladh (Address): Blackrock College, Rock Road, Blackrock, Co. Dublin, A94 FK84 |
| 1016(1).1c | Achar (Area) (Ha): 0.00051 Achar (Area) (m2): 5.1 Tuairisc (Description): Tráchtáil (Commercial) Contae (County): Baile Átha Cliath (Dublin) Seoladh (Address): Kiosk at Pembroke Road, Dublin 4, D04NR29 | | |

**SCEIDEAL /
SCHEDULE CUID I /
PART I**

Tailte atá á bhFáil go Buan / Lands Being Permanently Acquired

Talamh seachas talamh arb é atá ann teach nó tithe atá neamhoiriúnach chun daoine cónaí ann nó iontu agus nach féidir ar chostas réasúnach é nó iad a dhéanamh oiriúnach chun daoine cónaí ann nó iontu / Land other than land consisting of a house or houses unfit for human habitation and not capable of being rendered fit for human habitation at reasonable expense.

Chun mionsonraí a fháil faoi Úinéirí nó Úinéirí Ainme, faoi Léasaithe nó Léasaithe Ainme nó faoi Áititheoirí, féach Ordú Ceannaigh Éigeantaigh na Scéime Croichonair Bus ó Belfield/an Charraig Dhubh go Lár na Cathrach, 2022, ag www.belfieldblackrockscheme.ie / For details of the Owners or Reputed Owners/Lessees or Reputed Lessees/Occupiers please see the Belfield / Blackrock to City Centre Core Bus Corridor Scheme Compulsory Purchase Order 2022 at www.belfieldblackrockscheme.ie.

| Uimhir ar an léarscáil a taisceadh ag an Údarás Number on map deposited at NTA | Méid, tuairisc agus suíomh na talún Quantity, description and situation of land |
|---|--|
| 1022(1).1a | Achar (Area) (Ha): 0.01455 Achar (Area) (m2): 145.5 Tuairisc (Description): Bóthar Rochtana (Access Road) Contae (County): Baile Átha Cliath (Dublin) Seoladh (Address): Entrance to Willow Park School, Rock Road, Blackrock, Co. Dublin, A94TW98 |
| 1023(1).1c | Achar (Area) (Ha): 0.00011 Achar (Area) (m2): 1.1 Tuairisc (Description): Tráchtáil (Commercial) Contae (County): Baile Átha Cliath (Dublin) Seoladh (Address): College House, Rock Road, Blackrock, Co. Dublin |
| 1024(1).1i | Achar (Area) (Ha): 0.03868 Achar (Area) (m2): 386.8 Tuairisc (Description): Pobal (Community) Contae (County): Baile Átha Cliath (Dublin) Seoladh (Address): Open Space between College House and Carroll & Kinsella Motors, Rock Road, Blackrock, Co. Dublin |
| 1026(1).1e | Achar (Area) (Ha): 0.00548 Achar (Area) (m2): 54.8 Tuairisc (Description): Tuirlingtí Priobháideacha (Private Landings) Contae (County): Baile Átha Cliath (Dublin) Seoladh (Address): Landscaped area/bollards outside Blackrock College and Booterstown Hall, Rock Road, Blackrock, Co. Dublin |
| 1028(1).1f | Achar (Area) (Ha): 0.00458 Achar (Area) (m2): 45.8 Tuairisc (Description): Áineas (Recreational) Contae (County): Baile Átha Cliath (Dublin) Seoladh (Address): Ground to East of Rock Road, Blackrock, Dublin 4 |
| 1028(3).1f | Achar (Area) (Ha): 0.03029 Achar (Area) (m2): 302.9 Tuairisc (Description): Áineas (Recreational) Contae (County): Baile Átha Cliath (Dublin) Seoladh (Address): Ground to East of Rock Road, Blackrock, Dublin 4 |

| Uimhir ar an léarscáil a taisceadh ag an Údarás Number on map deposited at NTA | Méid, tuairisc agus suíomh na talún Quantity, description and situation of land |
|---|---|
| 1029(1).1d | Achar (Area) (Ha): 0.00156 Achar (Area) (m2): 15.6 Tuairisc (Description): Garraí Tí (House Garden) Contae (County): Baile Átha Cliath (Dublin) Seoladh (Address): Lios an Uisce, Rock Road, Blackrock, Co. Dublin |
| 1030(1).1e | Achar (Area) (Ha): 0.03483 Achar (Area) (m2): 348.3 Tuairisc (Description): Tuirlingtí Priobháideacha (Private Landings) Contae (County): Baile Átha Cliath (Dublin) Seoladh (Address): Frascati Shopping Centre, Frascati Road, Blackrock, Co. Dublin, A94Y2W6 |
| 1031(1).1i | Achar (Area) (Ha): 0.01015 Achar (Area) (m2): 101.5 Tuairisc (Description): Pobal (Community) Contae (County): Baile Átha Cliath (Dublin) Seoladh (Address): Grounds of St. Mary's Centre, Merrion Road, Dublin 4, D04NX60 |
| 1033(1).1d | Achar (Area) (Ha): 0.00308 Achar (Area) (m2): 30.8 Tuairisc (Description): Garraí Tí (House Garden) Contae (County): Baile Átha Cliath (Dublin) Seoladh (Address): Elm Court Apartments, Merrion Road, Dublin 4 |
| 1034(1).1d | Achar (Area) (Ha): 0.00071 Achar (Area) (m2): 7.1 Tuairisc (Description): Garraí Tí (House Garden) Contae (County): Baile Átha Cliath (Dublin) Seoladh (Address): 157 Merrion Road, Dublin 4, D04T0C6 |
| 1035(1).1d | Achar (Area) (Ha): 0.00067 Achar (Area) (m2): 6.7 Tuairisc (Description): Garraí Tí (House Garden) Contae (County): Baile Átha Cliath (Dublin) Seoladh (Address): 155 Merrion Road, Dublin 4, D04R5X5 |

**SCEIDEAL /
SCHEDULE CUID I /
PART I**

Tailte atá á bhFáil go Buan / Lands Being Permanently Acquired

Talamh seachas talamh arb é atá ann teach nó tithe atá neamhoiriúnach chun daoine cónaí ann nó iontu agus nach féidir ar chostas réasúnach é nó iad a dhéanamh oiriúnach chun daoine cónaí ann nó iontu / Land other than land consisting of a house or houses unfit for human habitation and not capable of being rendered fit for human habitation at reasonable expense.

Chun mionsonraí a fháil faoi Úinéirí nó Úinéirí Ainme, faoi Léasaithe nó Léasaithe Ainme nó faoi Áititheoirí, féach Ordú Ceannaigh Éigeantaigh na Scéime Croichonair Bus ó Belfield/an Charraig Dhubh go Lár na Cathrach, 2022, ag www.belfieldblackrockscheme.ie / For details of the Owners or Reputed Owners/Lesseees or Reputed Lesseees/Occupiers please see the Belfield / Blackrock to City Centre Core Bus Corridor Scheme Compulsory Purchase Order 2022 at www.belfieldblackrockscheme.ie.

| Uimhir ar an léarscáil a taisceadh ag an Údarás Number on map deposited at NTA | Méid, tuairisc agus suíomh na talún Quantity, description and situation of land |
|---|---|
| 1036(1).1d | Achar (Area) (Ha): 0.00079 Achar (Area) (m2): 7.9 Tuairisc (Description): Garraí Tí (House Garden) Contae (County): Baile Átha Cliath (Dublin) Seoladh (Address): 153 Merrion Road, Dublin 4, D04 W526 |
| 1037(1).1d | Achar (Area) (Ha): 0.00030 Achar (Area) (m2): 3.0 Tuairisc (Description): Garraí Tí (House Garden) Contae (County): Baile Átha Cliath (Dublin) Seoladh (Address): 151 Merrion Road, Dublin 4, D04 N1F9 |
| 1038(1).1d | Achar (Area) (Ha): 0.00152 Achar (Area) (m2): 15.2 Tuairisc (Description): Garraí Tí (House Garden) Contae (County): Baile Átha Cliath (Dublin) Seoladh (Address): 133 - 145 Merrion Road, Dublin 4, D04TH93 |
| 1039(1).1c | Achar (Area) (Ha): 0.00196 Achar (Area) (m2): 19.6 Tuairisc (Description): Tráchtáil (Commercial) Contae (County): Baile Átha Cliath (Dublin) Seoladh (Address): Entrance Gates to Former Bloomfield Avenue, Merrion Road, Dublin 4 |

| Uimhir ar an léarscáil a taisceadh ag an Údarás Number on map deposited at NTA | Méid, tuairisc agus suíomh na talún Quantity, description and situation of land |
|---|--|
| 1040(1).1d | Achar (Area) (Ha): 0.01740 Achar (Area) (m2): 174.0 Tuairisc (Description): Garraí Tí (House Garden) Contae (County): Baile Átha Cliath (Dublin) Seoladh (Address): Entrance to Merrion Village, Merrion Road, Dublin 4 |
| 1041(1).1c | Achar (Area) (Ha): 0.03885 Achar (Area) (m2): 388.5 Tuairisc (Description): Tráchtáil (Commercial) Contae (County): Baile Átha Cliath (Dublin) Seoladh (Address): Merrion House, Merrion Road, Dublin 4, D04 R2C5 |
| 1042(1).1e | Achar (Area) (Ha): 0.07629 Achar (Area) (m2): 762.9 Tuairisc (Description): Tuirlingtí Priobháideacha (Private Landings) Contae (County): Baile Átha Cliath (Dublin) Seoladh (Address): Entrance to Elm Park Development, Merrion Road, Dublin 4 |

SCEIDEAL / SCHEDULE

CUID II / PART II

Tailte atá á bhFáil go Sealadach / Lands Being Temporarily Acquired

Talamh seachas talamh arb é atá ann teach nó tithe atá neamhoiriúnach chun daoine cónaí ann nó iontu agus nach féidir ar chostas réasúnach é nó iad a dhéanamh oiriúnach chun daoine cónaí ann nó iontu / Land other than land consisting of a house or houses unfit for human habitation and not capable of being rendered fit for human habitation at reasonable expense

Chun mionsonraí a fháil faoi Úinéirí nó Úinéirí Ainme, faoi Léasaithe nó Léasaithe Ainme nó faoi Áititheoirí, féach Ordú Ceannaigh Éigeantaigh na Scéime Croíchonair Bus ó Belfield/an Charraig Dhubh go Lár na Cathrach, 2022, ag www.belfieldblackrockscheme.ie / For details of the Owners or Reputed Owners/Lesseees or Reputed Lesseees/Occupiers please see the Belfield / Blackrock to City Centre Core Bus Corridor Scheme Compulsory Purchase Order 2022 at www.belfieldblackrockscheme.ie.

| Uimhir ar an léarscáil a taisceadh ag an Údarás Number on map deposited at NTA | Méid, tuairisc agus suíomh na talún Quantity, description and situation of land |
|---|--|
| 1000(2).2f | Achar (Area) (Ha): 0.09811 Achar (Area) (m2): 981.1 Tuairisc (Description): Áineas (Recreational) Contae (County): Baile Átha Cliath (Dublin) Seoladh (Address): Elm Park Golf And Sports Club, Nutley House, 22 Nutley Lane, Dublin 4, D04 WE09 |
| 1000(3).2f | Achar (Area) (Ha): 0.00686 Achar (Area) (m2): 68.6 Tuairisc (Description): Áineas (Recreational) Contae (County): Baile Átha Cliath (Dublin) Seoladh (Address): Elm Park Golf And Sports Club, Nutley House, 22 Nutley Lane, Dublin 4, D04 WE09 |
| 1001(2).2c | Achar (Area) (Ha): 0.04806 Achar (Area) (m2): 480.6 Tuairisc (Description): Tráchtáil (Commercial) Contae (County): Baile Átha Cliath (Dublin) Seoladh (Address): RTE Campus, Nutley Lane, Donnybrook, Dublin 4 |
| 1002(1).2d | Achar (Area) (Ha): 0.00063 Achar (Area) (m2): 6.3 Tuairisc (Description): Garraí Tí (House Garden) Contae (County): Baile Átha Cliath (Dublin) Seoladh (Address): Rostellan, 118 Stillorgan Road, Dublin 4, D04CC01 |
| 1003(2).2i | Achar (Area) (Ha): 0.10067 Achar (Area) (m2): 1006.7 Tuairisc (Description): Pobal (Community) Contae (County): Baile Átha Cliath (Dublin) Seoladh (Address): Saint Vincents Hospital Lands, Merrion Road & Nutley Lane, Dublin 4 |
| 1003(3).2i | Achar (Area) (Ha): 0.01265 Achar (Area) (m2): 126.5 Tuairisc (Description): Pobal (Community) Contae (County): Baile Átha Cliath (Dublin) Seoladh (Address): Saint Vincents Hospital Lands, Merrion Road & Nutley Lane, Dublin 4 |

| Uimhir ar an léarscáil a taisceadh ag an Údarás Number on map deposited at NTA | Méid, tuairisc agus suíomh na talún Quantity, description and situation of land |
|---|---|
| 1003(4).2i | Achar (Area) (Ha): 0.02300 Achar (Area) (m2): 230.0 Tuairisc (Description): Pobal (Community) Contae (County): Baile Átha Cliath (Dublin) Seoladh (Address): Saint Vincents Hospital Lands, Merrion Road & Nutley Lane, Dublin 4 |
| 1003(7).2i | Achar (Area) (Ha): 0.00615 Achar (Area) (m2): 61.5 Tuairisc (Description): Pobal (Community) Contae (County): Baile Átha Cliath (Dublin) Seoladh (Address): Saint Vincents Hospital Lands, Merrion Road & Nutley Lane, Dublin 4 |
| 1004(4).2c | Achar (Area) (Ha): 0.01330 Achar (Area) (m2): 133.0 Tuairisc (Description): Tráchtáil (Commercial) Contae (County): Baile Átha Cliath (Dublin) Seoladh (Address): The Merrion Shopping Centre & Office Blocks A & B, Merrion Road, Dublin 4 |
| 1004(5).2c | Achar (Area) (Ha): 0.00306 Achar (Area) (m2): 30.6 Tuairisc (Description): Tráchtáil (Commercial) Contae (County): Baile Átha Cliath (Dublin) Seoladh (Address): The Merrion Shopping Centre & Office Blocks A & B, Merrion Road, Dublin 4 |
| 1004(6).2c | Achar (Area) (Ha): 0.00038 Achar (Area) (m2): 3.8 Tuairisc (Description): Tráchtáil (Commercial) Contae (County): Baile Átha Cliath (Dublin) Seoladh (Address): The Merrion Shopping Centre & Office Blocks A & B, Merrion Road, Dublin 4 |
| 1004(7).2c | Achar (Area) (Ha): 0.00247 Achar (Area) (m2): 24.7 Tuairisc (Description): Tráchtáil (Commercial) Contae (County): Baile Átha Cliath (Dublin) Seoladh (Address): The Merrion Shopping Centre & Office Blocks A & B, Merrion Road, Dublin 4 |

SCEIDEAL / SCHEDULE

CUID II / PART II

Tailte atá á bhFáil go Sealadach / Lands Being Temporarily Acquired

Talamh seachas talamh arb é atá ann teach nó tithe atá neamhoiriúnach chun daoine cónaí ann nó iontu agus nach féidir ar chostas réasúnach é nó iad a dhéanamh oiriúnach chun daoine cónaí ann nó iontu / Land other than land consisting of a house or houses unfit for human habitation and not capable of being rendered fit for human habitation at reasonable expense

Chun mionsonraí a fháil faoi Úinéirí nó Úinéirí Ainme, faoi Léasaithe nó Léasaithe Ainme nó faoi Áititheoirí, féach Ordú Ceannaigh Éigeantaigh na Scéime Croichonair Bus ó Belfield/an Charraig Dhubh go Lár na Cathrach, 2022, ag www.belfieldblackrockscheme.ie / For details of the Owners or Reputed Owners/Lessees or Reputed Lessees/Occupiers please see the Belfield / Blackrock to City Centre Core Bus Corridor Scheme Compulsory Purchase Order 2022 at www.belfieldblackrockscheme.ie.

| Uimhir ar an léarscáil a taisceadh ag an Údarás Number on map deposited at NTA | Méid, tuairisc agus suíomh na talún Quantity, description and situation of land |
|---|---|
| 1005(2).2d | Achar (Area) (Ha): 0.00520 Achar (Area) (m2): 52.0 Tuairisc (Description): Garraí Tí (House Garden) Contae (County): Baile Átha Cliath (Dublin) Seoladh (Address): 85 Merrion Road, Dublin 4, D04 Y2N8 |
| 1006(2).2d | Achar (Area) (Ha): 0.01356 Achar (Area) (m2): 135.6 Tuairisc (Description): Garraí Tí (House Garden) Contae (County): Baile Átha Cliath (Dublin) Seoladh (Address): Laneway Leading to Merrion View Avenue and Adjoining Entrance Gates, Dublin 4 |
| 1007(2).2c | Achar (Area) (Ha): 0.01151 Achar (Area) (m2): 115.1 Tuairisc (Description): Tráchtáil (Commercial) Contae (County): Baile Átha Cliath (Dublin) Seoladh (Address): Clayton Hotel, Merrion Road, Dublin 4, D04 P3C3 |
| 1008(1).2d | Achar (Area) (Ha): 0.00690 Achar (Area) (m2): 69.0 Tuairisc (Description): Garraí Tí (House Garden) Contae (County): Baile Átha Cliath (Dublin) Seoladh (Address): Apartment Blocks Malton, Linden & Grafton, 31/33 Merrion Road, Dublin 4 |
| 1009(1).2i | Achar (Area) (Ha): 0.06031 Achar (Area) (m2): 603.1 Tuairisc (Description): Pobal (Community) Contae (County): Baile Átha Cliath (Dublin) Seoladh (Address): Pembroke Town Hall and Library, Ballsbridge, Dublin 4, D04PP46 |
| 1011(1).2c | Achar (Area) (Ha): 0.00681 Achar (Area) (m2): 68.1 Tuairisc (Description): Tráchtáil (Commercial) Contae (County): Baile Átha Cliath (Dublin) Seoladh (Address): Entrance to Facebook/Meta, Merrion Road, Dublin 4 |
| 1012(1).2d | Achar (Area) (Ha): 0.00079 Achar (Area) (m2): 7.9 Tuairisc (Description): Garraí Tí (House Garden) Contae (County): Baile Átha Cliath (Dublin) Seoladh (Address): 1 Pembroke Road, Dublin 4, D04Y897 |

| Uimhir ar an léarscáil a taisceadh ag an Údarás Number on map deposited at NTA | Méid, tuairisc agus suíomh na talún Quantity, description and situation of land |
|---|--|
| 1012(2).2d | Achar (Area) (Ha): 0.00097 Achar (Area) (m2): 9.7 Tuairisc (Description): Garraí Tí (House Garden) Contae (County): Baile Átha Cliath (Dublin) Seoladh (Address): 1 Pembroke Road, Dublin 4, D04Y897 |
| 1013(1).2d | Achar (Area) (Ha): 0.00095 Achar (Area) (m2): 9.5 Tuairisc (Description): Garraí Tí (House Garden) Contae (County): Baile Átha Cliath (Dublin) Seoladh (Address): 11 Pembroke Road, Dublin 4, D04W9P9 |
| 1014(1).2f | Achar (Area) (Ha): 0.04091 Achar (Area) (m2): 409.1 Tuairisc (Description): Áineas (Recreational) Contae (County): Baile Átha Cliath (Dublin) Seoladh (Address): Plot of Ground alongside Canal at Wilton Terrace/Baggot Street Bridge, Dublin 4 |
| 1015(1).2c | Achar (Area) (Ha): 0.00227 Achar (Area) (m2): 22.7 Tuairisc (Description): Tráchtáil (Commercial) Contae (County): Baile Átha Cliath (Dublin) Seoladh (Address): 95 Baggot Street Lower, Dublin 2, D02HE14 |
| 1017(4).2f | Achar (Area) (Ha): 0.08312 Achar (Area) (m2): 831.2 Tuairisc (Description): Áineas (Recreational) Contae (County): Baile Átha Cliath (Dublin) Seoladh (Address): Blackrock Park, Rock Road, Blackrock, Co. Dublin |
| 1018(1).2e | Achar (Area) (Ha): 0.01166 Achar (Area) (m2): 116.6 Tuairisc (Description): Tuirlingtí Priobháideacha (Private Landings) Contae (County): Baile Átha Cliath (Dublin) Seoladh (Address): Entrance to Castledawson and Westfield, Rock Road, Blackrock, Co. Dublin |

SCEIDEAL / SCHEDULE

CUID II / PART II

Tailte atá á bhFáil go Sealadach / Lands Being Temporarily Acquired

Talamh seachas talamh arb é atá ann teach nó tithe atá neamhoiriúnach chun daoine cónaí ann nó iontu agus nach féidir ar chostas réasúnach é nó iad a dhéanamh oiriúnach chun daoine cónaí ann nó iontu / Land other than land consisting of a house or houses unfit for human habitation and not capable of being rendered fit for human habitation at reasonable expense

Chun mionsonraí a fháil faoi Úinéirí nó Úinéirí Ainme, faoi Léasaithe nó Léasaithe Ainme nó faoi Áititheoirí, féach Ordú Ceannaigh Éigeantaigh na Scéime Croíchonair Bus ó Belfield/an Charraig Dhubh go Lár na Cathrach, 2022, ag www.belfieldblackrockscheme.ie / For details of the Owners or Reputed Owners/Lesseees or Reputed Lesseees/Occupiers please see the Belfield / Blackrock to City Centre Core Bus Corridor Scheme Compulsory Purchase Order 2022 at www.belfieldblackrockscheme.ie.

| Uimhir ar an léarscáil a taisceadh ag an Údarás Number on map deposited at NTA | Méid, tuairisc agus suíomh na talún Quantity, description and situation of land |
|---|--|
| 1019(2).2i | Achar (Area) (Ha): 0.01448 Achar (Area) (m2): 144.8 Tuairisc (Description): Pobal (Community) Contae (County): Baile Átha Cliath (Dublin) Seoladh (Address): Blackrock Clinic, Rock Road, Blackrock, Co. Dublin, A94 E4X7 |
| 1019(3).2i | Achar (Area) (Ha): 0.03061 Achar (Area) (m2): 306.1 Tuairisc (Description): Pobal (Community) Contae (County): Baile Átha Cliath (Dublin) Seoladh (Address): Blackrock Clinic, Rock Road, Blackrock, Co. Dublin, A94 E4X7 |
| 1020(2).2i | Achar (Area) (Ha): 0.02296 Achar (Area) (m2): 229.6 Tuairisc (Description): Pobal (Community) Contae (County): Baile Átha Cliath (Dublin) Seoladh (Address): Glenalla, Castledawson Avenue, Blackrock, Co. Dublin |
| 1021(2).2i | Achar (Area) (Ha): 0.12119 Achar (Area) (m2): 1211.9 Tuairisc (Description): Pobal (Community) Contae (County): Baile Átha Cliath (Dublin) Seoladh (Address): Blackrock College, Rock Road, Blackrock, Co. Dublin, A94 FK84 |
| 1023(2).2c | Achar (Area) (Ha): 0.00110 Achar (Area) (m2): 11.0 Tuairisc (Description): Tráchtáil (Commercial) Contae (County): Baile Átha Cliath (Dublin) Seoladh (Address): College House, Rock Road, Blackrock, Co. Dublin |
| 1024(2).2i | Achar (Area) (Ha): 0.41237 Achar (Area) (m2): 4123.7 Tuairisc (Description): Pobal (Community) Contae (County): Baile Átha Cliath (Dublin) Seoladh (Address): Open Space between College House and Carroll & Kinsella Motors, Rock Road, Blackrock, Co. Dublin |

| Uimhir ar an léarscáil a taisceadh ag an Údarás Number on map deposited at NTA | Méid, tuairisc agus suíomh na talún Quantity, description and situation of land |
|---|--|
| 1025(1).2e | Achar (Area) (Ha): 0.00353 Achar (Area) (m2): 35.3 Tuairisc (Description): Tuirlingtí Priobháideacha (Private Landings) Contae (County): Baile Átha Cliath (Dublin) Seoladh (Address): Entrance to Local Authority Site, Rock Road, Blackrock, Co. Dublin |
| 1026(2).2e | Achar (Area) (Ha): 0.00240 Achar (Area) (m2): 24.0 Tuairisc (Description): Tuirlingtí Priobháideacha (Private Landings) Contae (County): Baile Átha Cliath (Dublin) Seoladh (Address): Landscaped area/bollards outside Blackrock College and Booterstown Hall, Rock Road, Blackrock, Co. Dublin |
| 1027(1).2e | Achar (Area) (Ha): 0.00267 Achar (Area) (m2): 26.7 Tuairisc (Description): Tuirlingtí Priobháideacha (Private Landings) Contae (County): Baile Átha Cliath (Dublin) Seoladh (Address): Plot at 115 Rock Road, Blackrock, Co. Dublin |
| 1028(2).2f | Achar (Area) (Ha): 0.00724 Achar (Area) (m2): 72.4 Tuairisc (Description): Áineas (Recreational) Contae (County): Baile Átha Cliath (Dublin) Seoladh (Address): Ground to East of Rock Road, Blackrock, Dublin 4 |
| 1028(4).2f | Achar (Area) (Ha): 0.05729 Achar (Area) (m2): 572.9 Tuairisc (Description): Áineas (Recreational) Contae (County): Baile Átha Cliath (Dublin) Seoladh (Address): Ground to East of Rock Road, Dublin 4 |
| 1029(2).2d | Achar (Area) (Ha): 0.00968 Achar (Area) (m2): 96.8 Tuairisc (Description): House Garden Contae (County): Baile Átha Cliath (Dublin) Seoladh (Address): Lios an Uisce, Rock Road, Blackrock, Co. Dublin |

SCEIDEAL / SCHEDULE

CUID II / PART II

Tailte atá á bhFáil go Sealadach / Lands Being Temporarily Acquired

Talamh seachas talamh arb é atá ann teach nó tithe atá neamhoiriúnach chun daoine cónaí ann nó iontu agus nach féidir ar chostas réasúnach é nó iad a dhéanamh oiriúnach chun daoine cónaí ann nó iontu / Land other than land consisting of a house or houses unfit for human habitation and not capable of being rendered fit for human habitation at reasonable expense

Chun mionsonraí a fháil faoi Úinéirí nó Úinéirí Ainme, faoi Léasaithe nó Léasaithe Ainme nó faoi Áititheoirí, féach Ordú Ceannaigh Éigeantaigh na Scéime Croíchonair Bus ó Belfield/an Charraig Dhubh go Lár na Cathrach, 2022, ag www.belfieldblackrockscheme.ie / For details of the Owners or Reputed Owners/Lesseees or Reputed Lesseees/Occupiers please see the Belfield / Blackrock to City Centre Core Bus Corridor Scheme Compulsory Purchase Order 2022 at www.belfieldblackrockscheme.ie.

| Uimhir ar an léarscáil a taisceadh ag an Údarás Number on map deposited at NTA | Méid, tuairisc agus suíomh na talún Quantity, description and situation of land |
|---|---|
| 1030(2).2e | Achar (Area) (Ha): 0.01085 Achar (Area) (m2): 108.5 Tuairisc (Description): Tuirlingtí Príobháideacha (Private Landings) Contae (County): Baile Átha Cliath (Dublin) Seoladh (Address): Frascati Shopping Centre, Frascati Road, Blackrock, Co. Dublin, A94Y2W6 |
| 1031(2).2i | Achar (Area) (Ha): 0.02234 Achar (Area) (m2): 223.4 Tuairisc (Description): Pobal (Community) Contae (County): Baile Átha Cliath (Dublin) Seoladh (Address): Grounds of St. Mary's Centre, Merrion Road, Dublin 4, D04NX60 |
| 1032(1).2e | Achar (Area) (Ha): 0.01463 Achar (Area) (m2): 146.3 Tuairisc (Description): Tuirlingtí Príobháideacha (Private Landings) Contae (County): Baile Átha Cliath (Dublin) Seoladh (Address): Merrion Gates Level Crossing, Dublin 4 |
| 1033(2).2d | Achar (Area) (Ha): 0.01335 Achar (Area) (m2): 133.5 Tuairisc (Description): Garraí Tí (House Garden) Contae (County): Baile Átha Cliath (Dublin) Seoladh (Address): Elm Court Apartments, Merrion Road, Dublin 4 |
| 1034(2).2d | Achar (Area) (Ha): 0.00431 Achar (Area) (m2): 43.1 Tuairisc (Description): Garraí Tí (House Garden) Contae (County): Baile Átha Cliath (Dublin) Seoladh (Address): 157 Merrion Road, Dublin 4, D04T0C6 |
| 1035(2).2d | Achar (Area) (Ha): 0.00422 Achar (Area) (m2): 42.2 Tuairisc (Description): Garraí Tí (House Garden) Contae (County): Baile Átha Cliath (Dublin) Seoladh (Address): 155 Merrion Road, Dublin 4, D04R5X5 |
| 1036(2).2d | Achar (Area) (Ha): 0.00605 Achar (Area) (m2): 60.5 Tuairisc (Description): Garraí Tí (House Garden) Contae (County): Baile Átha Cliath (Dublin) Seoladh (Address): 153 Merrion Road, Dublin 4, D04 W526 |

| Uimhir ar an léarscáil a taisceadh ag an Údarás Number on map deposited at NTA | Méid, tuairisc agus suíomh na talún Quantity, description and situation of land |
|---|---|
| 1037(2).2d | Achar (Area) (Ha): 0.00348 Achar (Area) (m2): 34.8 Tuairisc (Description): Garraí Tí (House Garden) Contae (County): Baile Átha Cliath (Dublin) Seoladh (Address): 151 Merrion Road, Dublin 4, D04 N1F9 |
| 1038(2).2d | Achar (Area) (Ha): 0.00772 Achar (Area) (m2): 77.2 Tuairisc (Description): Garraí Tí (House Garden) Contae (County): Baile Átha Cliath (Dublin) Seoladh (Address): 133 - 145 Merrion Road, Dublin 4, D04TH93 |
| 1039(2).2c | Achar (Area) (Ha): 0.00542 Achar (Area) (m2): 54.2 Tuairisc (Description): Tráchtáil (Commercial) Contae (County): Baile Átha Cliath (Dublin) Seoladh (Address): Entrance Gates to Former Bloomfield Avenue, Merrion Road, Dublin 4 |
| 1041(2).2c | Achar (Area) (Ha): 0.07243 Achar (Area) (m2): 724.3 Tuairisc (Description): Tráchtáil (Commercial) Contae (County): Baile Átha Cliath (Dublin) Seoladh (Address): Merrion House, Merrion Road, Dublin 4, D04 R2C5 |

Chun mionsonraí a fháil faoi Úinéirí nó Úinéirí Ainme, faoi Léasaithe nó Léasaithe Ainme nó faoi Áititheoirí, féach Ordú Ceannaigh Éigeantaigh na Scéime Croichonair Bus ó Belfield/an Charraig Dhubh go Lár na Cathrach, 2022, ag www.belfieldblackrockscheme.ie / For details of the Owners or Reputed Owners/Lesseees or Reputed Lesseees/Occupiers please see the Belfield / Blackrock to City Centre Core Bus Corridor Scheme Compulsory Purchase Order 2022 at www.belfieldblackrockscheme.ie.

**SCEIDEAL / SCHEDULE
CUID III (Roinn A) / PART III (Section A)**

Tuairisc ar na cearta slí poiblí a mhúchfar
Description of public rights of way to be extinguished

| Tagairt Reference | Tuairisc Description |
|-------------------|------------------------|
| | NÍ ANN DI NONE SUCH |

**SCEIDEAL / SCHEDULE
CUID III (Roinn B) / PART III (Section B)**

Tuairisc ar na cearta slí poiblí a shrianfar nó a gcuirfear isteach orthu ar shlí eile
Description of public rights of way to be restricted or otherwise interfered with

| Tagairt Reference | Tuairisc Description |
|-------------------|---|
| BA | Ceartha uile an trácha feithicilí (seachas rothair cos nó rothair eile, feithicilí éigeandála, feithicilí cothabhála, feithicilí bruscair) thar an gcuid sin den cheart slí poiblí ar Ascaill Sheoirse i gContae Bhaile Átha Cliath agus idir línte BA1 agus BA2, a léirítear i ndath glas ar an tagairt léarscáile taiscthe 1415-DM-0001. All rights of vehicular traffic (except pedal cycles or other bicycles, emergency vehicles, maintenance vehicles, refuse vehicles) over that section of the public right of way on George's Avenue in the County of Dublin and between the lines BA1 and BA2, shown coloured green on the deposit map reference 1415-DM-0001. |
| BB | Ceartha uile an trácha feithicilí (lena n-áirítear rothair cos agus rothair eile) soir ó thuaidh (ó Bhóthar Elgin i dtreo Bhóthar Pheambróg) thar an gcuid sin den cheart slí poiblí ar Bhóthar Elgin i gContae Bhaile Átha Cliath agus idir línte BB1 agus BB2, a léirítear i ndath glas ar an tagairt léarscáile taiscthe 1415-DM-0012. All rights of vehicular traffic (including pedal cycles and other bicycles) in a northeast-bound direction (from Elgin Road towards Pembroke Road) over that section of the public right of way on Elgin Road in the County of Dublin and between the lines BB1 and BB2, shown coloured green on the deposit map reference 1415-DM-0012. |

**SCEIDEAL / SCHEDULE
CUID IV (Roinn A) / PART IV (Section A)**

Tuairisc ar na cearta príobháideacha a bheidh le fáil
Description of private rights to be acquired

| Tagairt Reference | Tuairisc Description |
|-------------------|---|
| CA | Na cearta príobháideacha uile laistigh den limistéar atá scáthaithe i ndath oráiste agus ar a bhfuil an lipéad 'CA' ar an tagairt léarscáile taiscthe 1415-DM-0003 a bhaineann le tagairt plásáin 1021(1).1i, mar a thairiscítear i gCuid I den Sceideal. All private rights within the area shaded orange and labelled 'CA' on the deposit map reference 1415-DM-0003 associated with plot reference 1021(1).1i as described in Part I of the Schedule. |
| CB | Na cearta príobháideacha uile laistigh den limistéar atá scáthaithe i ndath oráiste agus ar a bhfuil an lipéad 'CB' ar an tagairt léarscáile taiscthe 1415-DM-0004 a bhaineann le tagairt plásáin 1022(1).1a, mar a thairiscítear i gCuid I den Sceideal. All private rights within the area shaded orange and labelled 'CB' on the deposit map reference 1415-DM-0004 associated with plot reference 1022(1).1a as described in Part I of the Schedule. |
| CC | Na cearta príobháideacha uile laistigh den limistéar atá scáthaithe i ndath oráiste agus ar a bhfuil an lipéad 'CC' ar an tagairt léarscáile taiscthe 1415-DM-0005 a bhaineann le tagairt plásáin 1042(1).1e, mar a thairiscítear i gCuid I den Sceideal. All private rights within the area shaded orange and labelled 'CC' on the deposit map reference 1415-DM-0005 associated with plot reference 1042(1).1e as described in Part I of the Schedule. |

**SCEIDEAL / SCHEDULE
CUID IV (Roinn A) / PART IV (Section A)**

Tuairisc ar na cearta príobháideacha a bheidh le fáil
Description of private rights to be acquired

| Tagairt Reference | Tuairisc Description |
|-------------------|---|
| CD | Na cearta príobháideacha uile laistigh den limistéar atá scáthaithe i ndath oráiste agus ar a bhfuil an lipéad 'CD' ar an tagairt léarscáile taiscthe 1415-DM-0008 a bhaineann le tagairt plásáin 1006(1).1d, mar a thairiscítear i gCuid I den Sceideal. All private rights within the area shaded orange and labelled 'CD' on the deposit map reference 1415-DM-0008 associated with plot reference 1006(1).1d as described in Part I of the Schedule. |
| CE | Na cearta príobháideacha uile laistigh den limistéar atá scáthaithe i ndath oráiste agus ar a bhfuil an lipéad 'CE' ar an tagairt léarscáile taiscthe 1415-DM-0012 a bhaineann le tagairt plásáin 1010(1).1h, mar a thairiscítear i gCuid I den Sceideal. All private rights within the area shaded orange and labelled 'CE' on the deposit map reference 1415-DM-0012 associated with plot reference 1010(1).1h as described in Part I of the Schedule. |
| CF | Na cearta príobháideacha uile laistigh den limistéar atá scáthaithe i ndath oráiste agus ar a bhfuil an lipéad 'CF' ar an tagairt léarscáile taiscthe 1415-DM-0003 a bhaineann le tagairt plásáin 1024(1).1i, mar a thairiscítear i gCuid I den Sceideal. All private rights within the area shaded orange and labelled 'CF' on the deposit map reference 1415-DM-0003 associated with plot reference 1024(1).1i as described in Part I of the Schedule. |
| CG | Na cearta príobháideacha uile laistigh den limistéar atá scáthaithe i ndath oráiste agus ar a bhfuil an lipéad 'CG' ar an tagairt léarscáile taiscthe 1415-DM-0007 a bhaineann le tagairt plásáin 1003(6).1i, mar a thairiscítear i gCuid I den Sceideal. All private rights within the area shaded orange and labelled 'CG' on the deposit map reference 1415-DM-0007 associated with plot reference 1003(6).1i as described in Part I of the Schedule. |
| CH | Na cearta príobháideacha uile laistigh den limistéar atá scáthaithe i ndath oráiste agus ar a bhfuil an lipéad 'CH' ar an tagairt léarscáile taiscthe 1415-DM-0007 a bhaineann le tagairt plásáin 1003(5).1i, mar a thairiscítear i gCuid I den Sceideal. All private rights within the area shaded orange and labelled 'CH' on the deposit map reference 1415-DM-0007 associated with plot reference 1003(5).1i as described in Part I of the Schedule. |
| CI | Na cearta príobháideacha uile laistigh den limistéar atá scáthaithe i ndath oráiste agus ar a bhfuil an lipéad 'CI' ar an tagairt léarscáile taiscthe 1415-DM-0008 a bhaineann le tagairt plásáin 1003(1).1i, mar a thairiscítear i gCuid I den Sceideal. All private rights within the area shaded orange and labelled 'CI' on the deposit map reference 1415-DM-0008 associated with plot reference 1003(1).1i as described in Part I of the Schedule. |
| CJ | Na cearta príobháideacha uile laistigh den limistéar atá scáthaithe i ndath oráiste agus ar a bhfuil an lipéad 'CJ' ar an tagairt léarscáile taiscthe 1415-DM-0010 a bhaineann le tagairt plásáin 1001(1).1c, mar a thairiscítear i gCuid I den Sceideal. All private rights within the area shaded orange and labelled 'CJ' on the deposit map reference 1415-DM-0010 associated with plot reference 1001(1).1c as described in Part I of the Schedule. |
| CK | Na cearta príobháideacha uile laistigh den limistéar atá scáthaithe i ndath oráiste agus ar a bhfuil an lipéad 'CK' ar an tagairt léarscáile taiscthe 1415-DM-0006 a bhaineann le tagairt plásáin 1033(1).1d, mar a thairiscítear i gCuid I den Sceideal. All private rights within the area shaded orange and labelled 'CK' on the deposit map reference 1415-DM-0006 associated with plot reference 1033(1).1d as described in Part I of the Schedule. |

Chun mionsonraí a fháil faoi Úinéirí nó Úinéirí Ainme, faoi Léasaithe nó Léasaithe Ainme nó faoi Áititheoirí, féach Ordú Ceannaigh Éigeantaigh na Scéime Croichonair Bus ó Belfield/an Charraig Dhubh go Lár na Cathrach, 2022, ag www.belfieldblackrockscheme.ie / For details of the Owners or Reputed Owners/Lessees or Reputed Lessees/Occupiers please see the Belfield / Blackrock to City Centre Core Bus Corridor Scheme Compulsory Purchase Order 2022 at www.belfieldblackrockscheme.ie.

SCEIDEAL / SCHEDULE
CUID IV (Roinn B) / PART IV (Section B)

Tuairisc ar na cearta príobháideacha a shrianfar nó a gcuirfear isteach orthu ar shlí eile

Description of private rights to be restricted or otherwise interfered with

| Tagairt Reference | Tuairisc Description |
|-------------------|--|
| DA | Na cearta príobháideacha uile laistigh den limistéar atá scáthaithe i ndath bánearg agus ar a bhfuil an lipéad 'DA' ar an tagairt léarscáile taiscthe 1415-DM-0012 a bhaineann le tagairt plásáin 1009(1).2i, mar a thuairiscítear i gCuid II den Sceideal. All private rights within the area shaded pink and labelled 'DA' on the deposit map reference 1415-DM-0012 associated with plot reference 1009(1).2i as described in Part II of the Schedule. |
| DB | Na cearta príobháideacha uile laistigh den limistéar atá scáthaithe i ndath bánearg agus ar a bhfuil an lipéad 'DB' ar an tagairt léarscáile taiscthe 1415-DM-0014 a bhaineann le tagairt plásáin 1012(1).2d, mar a thuairiscítear i gCuid II den Sceideal. All private rights within the area shaded pink and labelled 'DB' on the deposit map reference 1415-DM-0014 associated with plot reference 1012(1).2d as described in Part II of the Schedule. |
| DC | Na cearta príobháideacha uile laistigh den limistéar atá scáthaithe i ndath bánearg agus ar a bhfuil an lipéad 'DC' ar an tagairt léarscáile taiscthe 1415-DM-0014 a bhaineann le tagairt plásáin 1012(2).2d, mar a thuairiscítear i gCuid II den Sceideal. All private rights within the area shaded pink and labelled 'DC' on the deposit map reference 1415-DM-0014 associated with plot reference 1012(2).2d as described in Part II of the Schedule. |
| DD | Na cearta príobháideacha uile laistigh den limistéar atá scáthaithe i ndath bánearg agus ar a bhfuil an lipéad 'DD' ar an tagairt léarscáile taiscthe 1415-DM-0010 a bhaineann le tagairt plásáin 1002(1).2d, mar a thuairiscítear i gCuid II den Sceideal. All private rights within the area shaded pink and labelled 'DD' on the deposit map reference 1415-DM-0010 associated with plot reference 1002(1).2d as described in Part II of the Schedule. |

SCEIDEAL / SCHEDULE
CUID IV (Roinn C) / PART IV (Section C)

Tuairisc ar na cearta príobháideacha a shrianfar nó a gcuirfear isteach orthu ar shlí eile go sealadach

Description of private rights to be temporarily restricted or otherwise interfered with

| Tagairt Reference | Tuairisc Description |
|-------------------|---|
| EA | Na cearta príobháideacha uile laistigh den limistéar atá scáthaithe i ndath gorm agus ar a bhfuil an lipéad 'EA' ar an tagairt léarscáile taiscthe 1415-DM-0003 a bhaineann le tagairt plásáin 1021(2).2i, mar a thuairiscítear i gCuid II den Sceideal. All private rights within the area shaded blue and labelled 'EA' on the deposit map reference 1415-DM-0003 associated with plot reference 1021(2).2i as described in Part II of the Schedule. |
| EB | Na cearta príobháideacha uile laistigh den limistéar atá scáthaithe i ndath gorm agus ar a bhfuil an lipéad 'EB' ar an tagairt léarscáile taiscthe 1415-DM-0008 a bhaineann le tagairt plásáin 1006(2).2d, mar a thuairiscítear i gCuid II den Sceideal. All private rights within the area shaded blue and labelled 'EB' on the deposit map reference 1415-DM-0008 associated with plot reference 1006(2).2d as described in Part II of the Schedule. |
| EC | Na cearta príobháideacha uile laistigh den limistéar atá scáthaithe i ndath gorm agus ar a bhfuil an lipéad 'EC' ar an tagairt léarscáile taiscthe 1415-DM-0014 a bhaineann le tagairt plásáin 1013(1).2d, mar a thuairiscítear i gCuid II den Sceideal. All private rights within the area shaded blue and labelled 'EC' on the deposit map reference 1415-DM-0014 associated with plot reference 1013(1).2d as described in Part II of the Schedule. |
| ED | Na cearta príobháideacha uile laistigh den limistéar atá scáthaithe i ndath gorm agus ar a bhfuil an lipéad 'ED' ar an tagairt léarscáile taiscthe 1415-DM-0014 a bhaineann le tagairt plásáin 1012(1).2d, mar a thuairiscítear i gCuid II den Sceideal. All private rights within the area shaded blue and labelled 'ED' on the deposit map reference 1415-DM-0014 associated with plot reference 1012(1).2d as described in Part II of the Schedule. |

SCEIDEAL / SCHEDULE
CUID IV (Roinn C) / PART IV (Section C)

Tuairisc ar na cearta príobháideacha a shrianfar nó a gcuirfear isteach orthu ar shlí eile go sealadach

Description of private rights to be temporarily restricted or otherwise interfered with

| Tagairt Reference | Tuairisc Description |
|-------------------|---|
| EE | Na cearta príobháideacha uile laistigh den limistéar atá scáthaithe i ndath gorm agus ar a bhfuil an lipéad 'EE' ar an tagairt léarscáile taiscthe 1415-DM-0014 a bhaineann le tagairt plásáin 1012(2).2d, mar a thuairiscítear i gCuid II den Sceideal. All private rights within the area shaded blue and labelled 'EE' on the deposit map reference 1415-DM-0014 associated with plot reference 1012(2).2d as described in Part II of the Schedule. |
| EF | Na cearta príobháideacha uile laistigh den limistéar atá scáthaithe i ndath gorm agus ar a bhfuil an lipéad 'EF' ar an tagairt léarscáile taiscthe 1415-DM-0003 a bhaineann le tagairt plásáin 1024(2).2i, mar a thuairiscítear i gCuid II den Sceideal. All private rights within the area shaded blue and labelled 'EF' on the deposit map reference 1415-DM-0003 associated with plot reference 1024(2).2i as described in Part II of the Schedule. |
| EG | Na cearta príobháideacha uile laistigh den limistéar atá scáthaithe i ndath gorm agus ar a bhfuil an lipéad 'EG' ar an tagairt léarscáile taiscthe 1415-DM-0007 a bhaineann le tagairt plásáin 1003(7).2i, mar a thuairiscítear i gCuid II den Sceideal. All private rights within the area shaded blue and labelled 'EG' on the deposit map reference 1415-DM-0007 associated with plot reference 1003(7).2i as described in Part II of the Schedule. |
| EH | Na cearta príobháideacha uile laistigh den limistéar atá scáthaithe i ndath gorm agus ar a bhfuil an lipéad 'EH' ar an tagairt léarscáile taiscthe 1415-DM-0007 a bhaineann le tagairt plásáin 1003(3).2i, mar a thuairiscítear i gCuid II den Sceideal. All private rights within the area shaded blue and labelled 'EH' on the deposit map reference 1415-DM-0007 associated with plot reference 1003(3).2i as described in Part II of the Schedule. |
| EI | Na cearta príobháideacha uile laistigh den limistéar atá scáthaithe i ndath gorm agus ar a bhfuil an lipéad 'EI' ar an tagairt léarscáile taiscthe 1415-DM-0008 a bhaineann le tagairt plásáin 1003(2).2i, mar a thuairiscítear i gCuid II den Sceideal. All private rights within the area shaded blue and labelled 'EI' on the deposit map reference 1415-DM-0008 associated with plot reference 1003(2).2i as described in Part II of the Schedule. |
| EJ | Na cearta príobháideacha uile laistigh den limistéar atá scáthaithe i ndath gorm agus ar a bhfuil an lipéad 'EJ' ar an tagairt léarscáile taiscthe 1415-DM-0008 a bhaineann le tagairt plásáin 1003(4).2i, mar a thuairiscítear i gCuid II den Sceideal. All private rights within the area shaded blue and labelled 'EJ' on the deposit map reference 1415-DM-0008 associated with plot reference 1003(4).2i as described in Part II of the Schedule. |
| EK | Na cearta príobháideacha uile laistigh den limistéar atá scáthaithe i ndath gorm agus ar a bhfuil an lipéad 'EK' ar an tagairt léarscáile taiscthe 1415-DM-0010 a bhaineann le tagairt plásáin 1001(2).2c, mar a thuairiscítear i gCuid II den Sceideal. All private rights within the area shaded blue and labelled 'EK' on the deposit map reference 1415-DM-0010 associated with plot reference 1001(2).2c as described in Part II of the Schedule. |
| EL | Na cearta príobháideacha uile laistigh den limistéar atá scáthaithe i ndath gorm agus ar a bhfuil an lipéad 'EL' ar an tagairt léarscáile taiscthe 1415-DM-0006 a bhaineann le tagairt plásáin 1033(2).2d, mar a thuairiscítear i gCuid II den Sceideal. All private rights within the area shaded blue and labelled 'EL' on the deposit map reference 1415-DM-0006 associated with plot reference 1033(2).2d as described in Part II of the Schedule. |